

HYPAC

C747C

3 Ton Double Drum Vibratory Compactors



- ▶▶▶ *Isolated Operator's Platform*
- ▶▶▶ *Sliding Operator's Seating Position*
- ▶▶▶ *Non-Corrosive Water Spray System with Interval Timer*
- ▶▶▶ *Two (2) Vibration Frequency Settings*
- ▶▶▶ *Two (2) Centrifugal Force Values*



Pressurized water system with wind protected quick-disconnect spray nozzles.



Easy access to Kubota diesel engine and drive components.



All controls are centralized for ease of operation.

Applications...



The new HYPAC C747C Tandem Vibratory Roller sets the standard for one of the fastest growing roller classes. With increased engine horsepower, higher vibrating frequencies and resultant higher centrifugal forces, this new model delivers greater production results. Providing not only enhanced compaction performance, the next generation HYPAC C747C, also delivers economy of operation, maximum versatility and exceptional maneuverability. Good compaction results are highly dependent on operator comfort and efficiency. The HYPAC C747C delivers positive and responsive controls for precise acceleration, braking, steering and vibratory action, resulting in optimum productivity.

- ➔ Highway Construction and Maintenance
- ➔ Walkways, Bicycle and Cart Paths
- ➔ Driveways
- ➔ Parking Lots
- ➔ Asphalt Repairs and Resurfacing

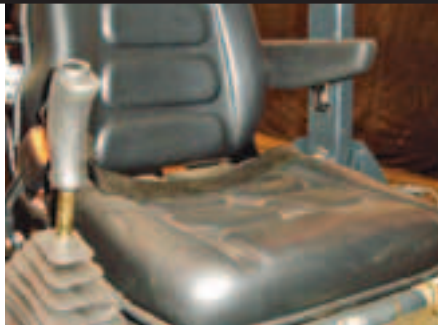
Achieve Maximum Productivity...

- Two vibrating frequencies for improved compaction on a wider variety of material types and higher working speeds for enhanced productivity.
- Selectable automatic vibration control setting to insure positive results for even the most inexperienced operator(s).
- Large diameter drums minimize pushing and cracking of asphalt surface, helping to insure a high quality finish.
- High curb clearance and minimum lateral overhang provide for working close to obstructions.
- Front and rear, lift off, spring loaded scrapers on each drum insure clean drums in either direction of travel.
- Strategic, central lifting point allows simple and safe vehicle loading.
- Thick drum shells (wrappers) and end plates provide maximum strength for long life and durability.
- Vandal protected instrument panel and locking hood provide for jobsite protection and security.

Provides Maximum Versatility



Bolt-on oscillating, articulation joint with standard crabsteer offset provision.



Standard lateral sliding seat for improved drum edge and overall side visibility.

Standard Equipment

- ▣ Hydrostatic travel and vibration drives
- ▣ Bolt-on oscillating/articulation joint
- ▣ Hydrostatic articulated steering
- ▣ Hydrostatic articulated steering
- ▣ Spring-Applied, Hydraulically-Released (SAHR) parking brakes on each drum
- ▣ Vibration control in travel lever(s)
- ▣ Automatic vibration control setting
- ▣ 2 scrapers per drum
- ▣ Laterally sliding operator's seat
- ▣ Plastic water tank with water level gauge
- ▣ Pressure sprinkler system with interval timer
- ▣ Auto water spray stop in neutral
- ▣ Control and warning indicator lights for:
 - Hydraulic oil temperature
 - Engine oil pressure
 - Engine water temperature
 - Battery
 - Brakes
 - Digital hourmeter
- ▣ Lockable engine cover
- ▣ Vandal protected instrument panel
- ▣ Transport tie-down/lifting points front/rear
- ▣ Emergency stop button
- ▣ FOPS/ROPS with seat belt
- ▣ Rear drum vibration lock out
- ▣ Corrosion and weather protected ignition switch
- ▣ Back-up alarm

Maintenance and Safety

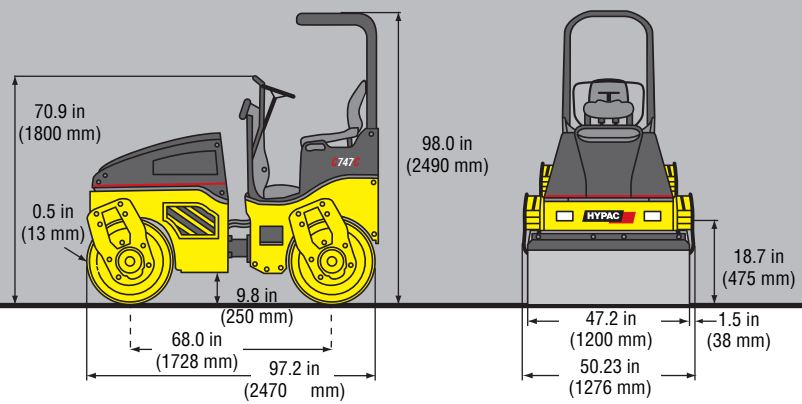
- Slanted leg support design offers improved visibility of drum edges and high curb clearance, allowing closer compaction around obstacles while avoiding costly side clearance problems.
- Large, integral tie-down/lifting points makes transporting easier with less risk of physical roller damage.
- Vibration isolated operator's platform provides for fatigue-free operation for longer shifts and increased productivity.
- Directional travel lever, with integral vibration control switch, is strategically positioned for a more comfortable operating position.
- Hydrostatic drive, axial piston travel pump provides a smooth, yet responsive, travel control.
- Standard FOPS/ROPS with seat belts provides additional operator safety.
- Bolt-on oscillating, articulation centerjoint, long life and simplified servicing.
- Hydraulic filter system provides extended oil and filter change intervals of 2000 working hours or 2 years.
- SAHR (Spring-Applied-Hydraulically-Released) brakes are highly reliable and maintenance free.
- Wide opening hood provides excellent access to engine and hydraulic components for servicing ease.

Optional Equipment

- Working lights (front & rear)
- Edge cutter
- Tool kit
- Folding ROPS with seat belt
- Single point lifting device
- Indicator and hazard lights
- Rotary beacon
- Double travel lever (sliding seat)
- Special paint

Note: Repeat number of passes over the same area is required to achieve specified compaction efficiency/density. Successive passes over same area results in reduced area coverage and productivity. Rolling speed selected provides impact spacing of a minimum 10 impacts per foot at high vibration frequency setting. Actual compaction efficiency is determined by job conditions.

ASPHALTIC CONCRETE (MATERIAL WEIGHT 140 LB/CU FT)						
# Passes	Rolling Speed (mph)	Area Coverage sq yd/hr	Productivity in cu yd/hr by lift thickness, 100 % efficiency			
			1.5 inches	2 inches	2.5 inches	3 inches
2	4.77	5504	434	579	723	868
3	4.77	3669	289	386	482	579
4	4.77	2752	217	289	362	434
5	4.77	2201	174	231	289	347
6	4.77	1835	145	193	241	289

HYPAC**C747C**

Technical Data...

**HYPAC
C747C**

Weights

Basic Weight with ROPS.....	lbs	(kg)	5236	(2375)
Operating Weight.....	lbs	(kg)	5732	(2600)
Average axle load.....	lbs	(kg)	2866	(1300)
Average static linear load CECE.....	pli	(kg/cm)	60.7	(10.8)

Dimensions

Length with ROPS.....	in	(mm)	97.2	(2470)
Track Radius, inner.....	in	(mm)	103.1	(2620)
Dimensions.....			see sketch	

Driving Characteristics (depending on site conditions)

Speed (with vibration).....	mph	(kmph)	0-4.0	(0-6.5)
Speed (for transport).....	mph	(kmph)	0-7.5	(0-12)
Max. gradeability without/with vibration.....	%		40/30	

Drive

Engine manufacturer.....			Kubota	
Type.....			D 1703 MDI	
Cooling.....			Water	
Number of cylinders.....			3	
Performance ISO 9249 (max).....	hp	(kW)	34.3	(25.2)
Speed (max).....	rpm		2700	
Performance SAE J1349 (max).....	hp	(kW)	33.8	(25.2)
Speed (max).....	rpm		2700	
Throttle position 1.....	rpm		2200	
Throttle position 2.....	rpm		2600	
Electric Equipment.....	V		12	

Brakes

Service brake.....	hydrostatic
Parking brake.....	SAHR

Steering

Steering system.....	oscillating, articulating
Steering method.....	hydrostatic
Steering angle +/-.....	30 degrees
Oscillating angle +/-.....	12 degrees

Vibratory system

Vibrating drum.....			f + r	
Drive system.....			hydrostatic	
Frequency.....	vpm	(Hz)	3300/4200	(55/70)
Amplitude.....	in	(mm)	0.020	(0.52)
Centrifugal force (each drum).....	lbs	(kN)	6300/10125	(28/45)

Water Spray System

Type of water spray system.....	pressurized
---------------------------------	-------------

Capacities

Fuel.....	gal	(l)	10.6	(40)
Water.....	gal	(l)	58.1	(220)

Technical modifications reserved. Machines may be shown with options.

BOMAG
FAYAT GROUP

BOMAG Americas, Inc.
2000 Kentville Rd. • Kewanee, IL 61443
Tel: 309 853-3571 • Fax: 309 852-0350