

# HYPAC

## *C330B Series*

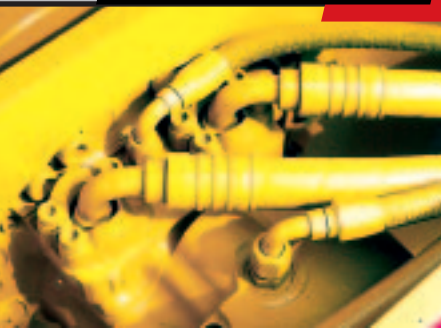
**3-5 and 4-6 Ton  
Steel Wheel Compactors**



- *Hydrostatic Drive*
- *Rugged, High Strength Frame*
- *No Grease Daily Points*
- *Dual, Center Facing Seats*

# HYPAC

## The C330B Series - Precision-Machin



C330B features full hydrostatic drive with a low-speed, high-torque travel motor



Each drum is standard equipped with a full width cocoa mat and two scraper bars for cleaning in both directions of travel



Simplified operation through convenient location of controls

## Applications...



The dual center-facing seats of the C330B position the operator for visibility, control and comfort. The operator has full view of the exposed drums and the side of the roller. For greater versatility and easy transportation, the C330B is available in a 4-6 ton model equipped with tow package. This design includes a 12-volt electric socket with rear lights, positive wheel lock, guide roll yoke locks, tongue lock and safety chains. Mounted on the frame within easy reach, the hydraulic control valve lowers the towing wheels while raising the roller to a travel position providing 7 inches of road clearance under the drums.

- ➡ Highway Construction
- ➡ Commercial and Residential Paving
- ➡ Driveways
- ➡ Parking Lots
- ➡ Asphalt Resurfacing

## Achieve Maximum Productivity...

- Hydrostatic drive allows smooth, effortless acceleration, deceleration and directional changes.
- Radial piston design transmission provides excellent gradeability, as well as top production at high travel speed.
- Hydrostatic steering with automotive type steering wheel provides the operator with controlled maneuverability.
- Cummins A2300 diesel engine provides ample reserve power for even the most demanding jobs.
- The precision machined drum(s) provide smooth, compacted surface results.
- Two-section steering drum minimizes scuffing in sharp turns.
- Dual scrapers and full width cocoa mats on each drum minimize asphalt pick-up.
- Hydrodynamic braking of hydrostatic drive system provides smooth, controlled, positive stops.

# ed Drums Provide Smooth, Compacted Surfaces



The C330B 4-6 ton design with tow package allows for easy transportation of the compactor



All daily maintenance checkpoints and filters are easily reached

## Maintenance and Safety

- The frame overhang is minimal and all drive components are inside the frame.
- There are no “grease daily” fittings.
- High efficiency, 7-micron filter helps prolong hydraulic component life. Indicator light on console immediately alerts the operator when the filter requires service.
- Daily maintenance checkpoints and filters are easily reached.
- Pressure test ports are centrally located, using standard capped fittings for quick hassle-free servicing.
- The non-corrosive water spray system features PVC spray bars and quick-disconnect spray nozzles.
- Center opening hood offers excellent engine area accessibility.
- Simple ergonomic layout of controls makes operation easy.
- Travel motor brake applies automatically when engine is shut down or with a loss of transmission hydraulic pressure.
- The water tank, fuel tank and engine are positioned down inside the frame keeping a low center of gravity.
- The dual center-facing seats provide the operator excellent visibility of the drum and water spray system during travel in either direction.
- Falling-Object/Roll-Over Protective Structure (FOPS/ROPS) and seat belts are standard features.
- The transverse engine mounting keeps the operator comfortable by directing air, noise and exhaust 90° away.

### Standard Equipment (3-5 ton)

- Cummins A2300 Diesel Engine
- Pressurized Water Spray System
- Horn
- Front and Rear Drum Scrapers
- Cocoa Mats
- Vandal Guards
- ROPS/FOPS and Seat Belts

### Optional Equipment (3-5 ton)

- Headlights (Front and Rear)
- Turn Signals and 4-way Flashers
- Special Paint, 1 Color (Enamel Only)

### Standard Equipment (4-6 ton)

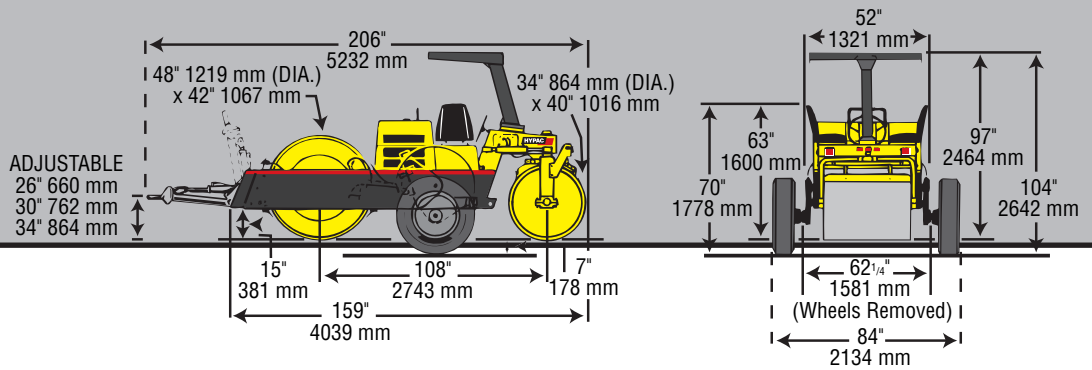
- Cummins A2300 Diesel Engine
- Pressurized Water Spray System
- Horn
- Front and Rear Drum Scrapers
- Cocoa Mats
- Vandal Guards
- ROPS/FOPS and Seat Belts
- Towing Package
- Towing Lights
- Towing Safety Chains
- 10:00 x 20 - 12 Ply Tires

### Optional Equipment (4-6 ton)

- Headlights (Front and Rear)
- Turn Signals and 4-way Flashers
- Special Paint, 1 Color (Enamel Only)
- 9:00 x 20 - 12 Ply Tires
- Electric Brakes
- Electric Brakes Control Kit

# HYPAC

## C330B Series



# Technical Data...

**HYPAC  
C330B**

### Weights

Operating weight 3-5 ton	lb	(kg)	9380	(4255)
Operating weight w/ full ballast 3-5 ton	lb	(kg)	12080	(5480)
Operating weight 4-6 ton	lb	(kg)	10347	(4693)
Operating weight w/ full ballast 4-6 ton	lb	(kg)	13047	(5918)
Max. static linear load/drive drum 3-5 ton	lb/in	(kg/cm)	171	(30.5)
Max. static linear load/guide drum 3-5 ton	lb/in	(kg/cm)	122	(21.9)
Max. static linear load/drive drum 4-6 ton	lb/in	(kg/cm)	191	(34.1)
Max. static linear load/guide drum 4-6 ton	lb/in	(kg/cm)	126	(22.5)

\* Operating weight includes full fuel tank, half tank waterspray, FOPS/ROPS and 175 lb operator

### Dimensions

Track radius, inner	in	(mm)	112.5	(2858)
Height with FOPS/ROPS	in	(mm)	97	(2464)

### Driving Characteristics

Speed (1)	mph	(km/h)	0-11	(0-17.7)
-----------	-----	--------	------	----------

### Drive

Engine manufacturer			Cummins	
Type			A2300	
Cooling			water	
Number of cylinders			4	
Performance SAE, brake	hp	(kW)	47	(35)
Speed	rpm	(min-1)	2600	(2600)
Fuel			diesel	
Electric equipment	V		12	
Drive system			hydrostatic	
Driven drum			R	

### Brakes

Service brake	hydrostatic
Secondary/Parking brake	SAHR

### Steering

Steering system	automotive-type	
Steering method	hydraulic	
Steering angle +/-	degrees	39
Oscillating angle straight +/-	degrees	25
Oscillating angle full turn +/-	degrees	15

### Water Spray System

Type of spray system	pressurized
----------------------	-------------

### Capacities

Fuel	gal	(l)	17	(64)
Water	gal	(l)	100	(379)
Hydraulic oil reservoir	gal	(l)	15	(57)
Coolant system	gal	(l)	4.75	(18)

Technical modifications reserved. Machines may be shown with options.

**BOMAG**  
FAYAT GROUP

**BOMAG Americas, Inc.**  
2000 Kentville Rd. • Kewanee, IL 61443  
Tel: 309 853-3571 • Fax: 309 852-0350